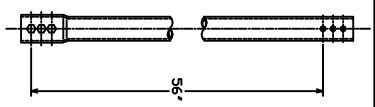
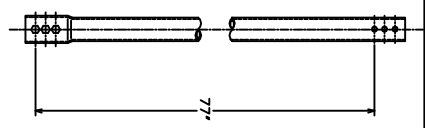


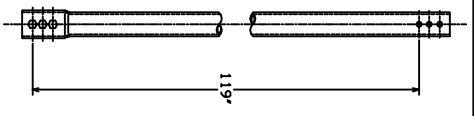
CAT. NDL
C107-0573



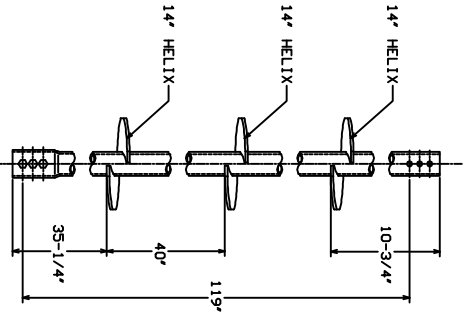
CAT. NDL
C107-0574



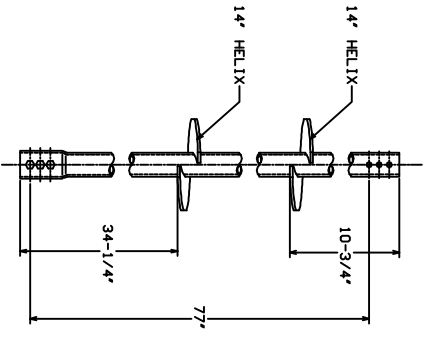
CAT. NDL
C107-0575



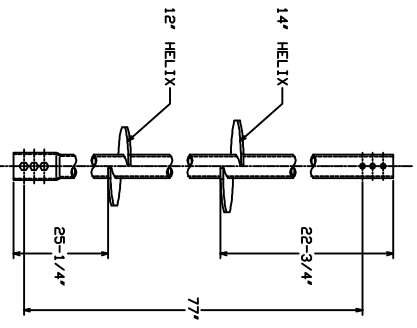
CAT. NDL
C107-0576



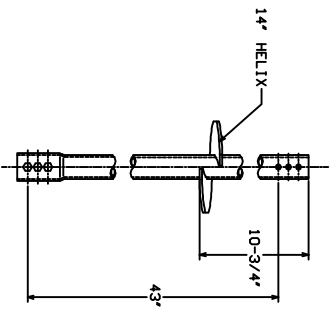
CAT. NDL
C107-0580



CAT. NDL
C107-0579



CAT. NDL
C107-0578



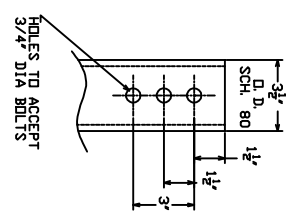
CAT. NDL
C107-0577

INCLUDED HARDWARE

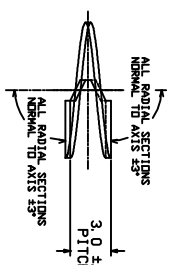
PART NDL	DESCRIPTION
P001-0967	MACH BOLT, 3/4" X 5-3/4" GR-5
450315	HEX NUT, 3/4"
058331	LDRKASHER, 3/4"

-NOTES-

1. FINISH, HOT DIP GALVANIZE PER ASTM A153-(LATEST REVISION)
2. MANUFACTURER TO HAVE IN EFFECT INDUSTRY RECOGNIZED WRITTEN QUALITY CONTROL FOR ALL MATERIALS AND MANUFACTURING PROCESSES.
3. MAXIMUM INSTALLATION TORQUE RATING FOR RS3500, 300 HELICAL.
4. ALLS UNLESS OTHERWISE SPECIFIED.
5. WELDERS BEING QUALIFIED UNDER SECTION 5, PART C.
6. EXTENSIONS MUST BE PROVIDED WITH A HOT FORGE EXPANDED INTEGRAL COUPLING CONNECTION ON ONE END.
7. COUPLING BOLTS (3 REQUIRED) PER SPEC SAE J429 GRADE 5.



HOLES TO ACCEPT
3/4" DIA BOLTS



HELIX MUST BE FORMED BY MATCHING METAL DIE
(SIDE VIEW OF TRUE HELICAL FORM)

CHANCE
TOLERANCE CHART

HUBBEL POWER SYSTEMS
RS3500.300
EXTENSIONS

SIZE	CDG NO.	DATE	REV
D	34107-10045	11/20/95	2

DESIGNED BY: J. J. HUBBEL
CHECKED BY: J. J. HUBBEL
DRAWN BY: J. J. HUBBEL
DATE: 11/20/95
SHEET 2 OF 2