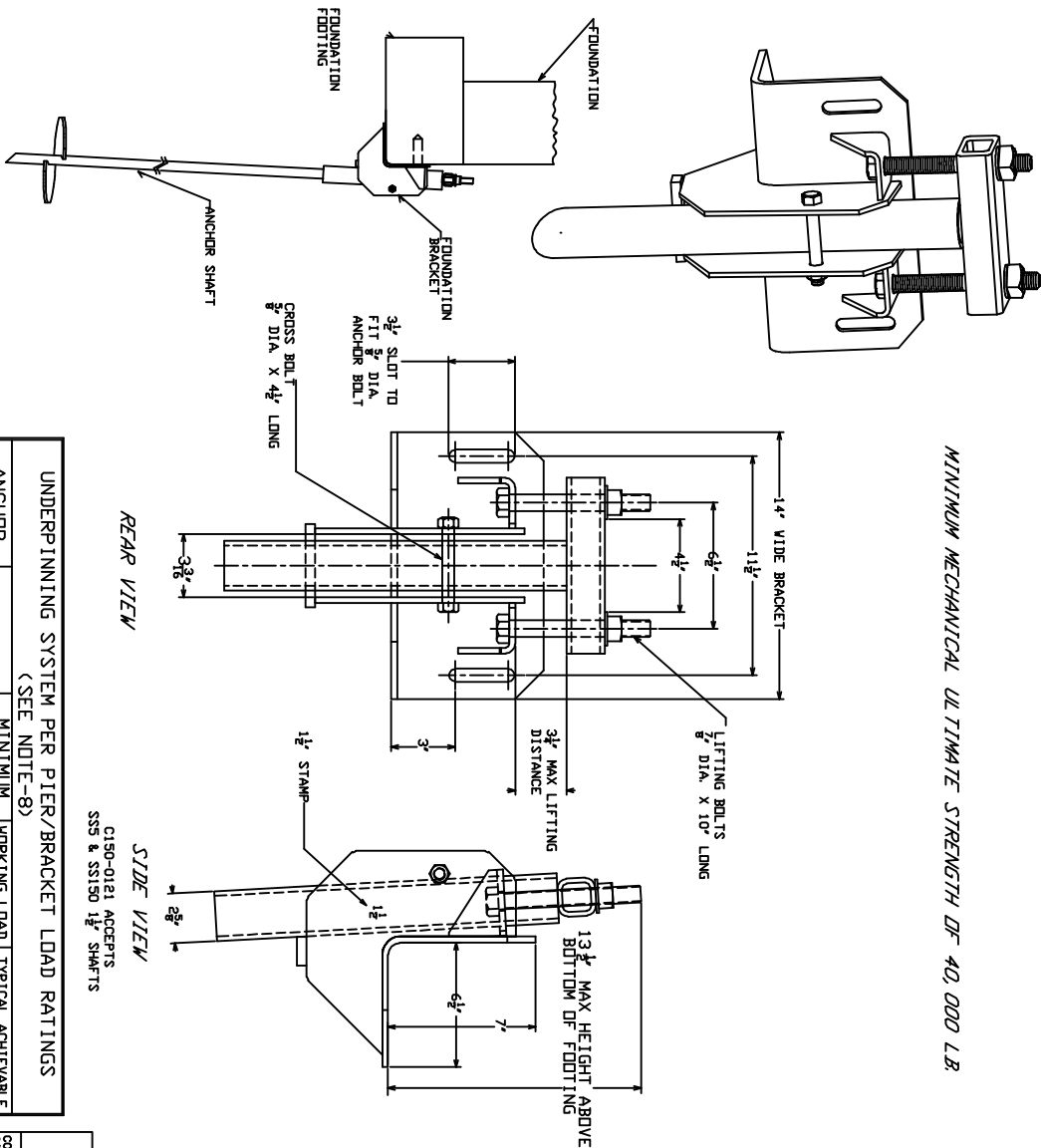


-NOTES-

1. HOT DIP GALVANIZE PER ASTM A153-LATEST REVISION.
2. ASSEMBLE COMPLETE AS SHOWN IN SIDE VIEW.
3. DID NOT EXCEED 165 FT-LBS OF TORQUE ON 7/8" DIA LIFTING BOLTS DURING STABILIZING OR LOAD LOCK-OFF.
4. RECOMMENDED ANCHOR SHAFT CUTOFF LEVEL ABOVE THE BOTTOM OF THE FOOTING IS 10" TO 11" FOR MAXIMUM LIFT DISTANCE.
5. FOR DETAILED INSTALLATION INSTRUCTIONS, READ CHANCE BULLETIN 01-9812.
6. MATERIAL SPECIFICATIONS:  
BRACKET BODY : PER ASTM A36 AND ASTM A570 GR. 50.  
LIFTING TUBE : HOT ROLLED MECHANICAL TUBING PER ASTM A500.  
LIFTING BOLTS : HEX HEAD BOLT PER SAE J429 GRADE 5.  
CROSS BOLT : HEX HEAD BOLT PER SAE J429 GRADE 5.
7. THE C150-0121 BRACKET HAS A MINIMUM ULTIMATE STRENGTH OF 40,000 LBS. A FACTOR OF SAFETY OF 2 YIELDS A SAFE WORKING LOAD OF 20,000 LBS FOR THE BRACKET ONLY.
8. THE CAPACITY OF THE UNDERPINNING SYSTEM IS A FUNCTION OF MANY INDIVIDUAL ELEMENTS, INCLUDING THE CAPACITY OF THE FOUNDATION, BRACKET, PIER SHAFT HELICAL PLATE, AND BEARING STRATA, AS WELL AS THE STRENGTH OF THE FOUNDATION TO BRACKET CONNECTION AND THE QUALITY OF PIER INSTALLATION. COLUMN THREE OF THE TABLE SHOWS TYPICAL UNDERPINNING SYSTEM CAPACITIES THAT ARE ACHIEVABLE UNDER NORMAL CONDITIONS. YOUR ACHIEVABLE CAPACITIES COULD BE HIGHER OR LOWER DEPENDING ON THE ABOVE FACTORS.

MINIMUM MECHANICAL ULTIMATE STRENGTH OF 40,000 LB.



TYPICAL INSTALLATION FOUNDATION REPAIR BRACKET

UNDERPINNING SYSTEM PER PIER/BRACKET LOAD RATINGS (SEE NOTE-8)			
ANCHOR TYPE	BRACKET	MINIMUM ULTIMATE STRENGTH	WORKING LOAD E.O. SAFETY FACTOR
SSS	C150-0121	40,000 LB	20,000 LB
SS150	C150-0121	40,000 LB	20,000 LB

<p align="center"><b>CHANCE</b> TOLERANCE CHART</p>		<p align="center"><b>HUBBELL POWER SYSTEMS</b></p>	
<p>CONFIDENTIAL: THIS DRAWING AND ITS CONTENTS ARE CONFIDENTIAL AND THE POWER SYSTEMS ARE NOT TO BE REPRODUCED, DISTRIBUTION OR COPIES MAY BE MADE WITHOUT THE WRITTEN CONSENT OF HUBBELL POWER SYSTEMS UNPUBLISHED. ALL RIGHTS RESERVED UNDER THE COPYRIGHT LAWS.</p>		<p>ICBD LISTED ER-5110</p> <p>SBCCI LISTED ER-9504B</p>	
<p>DO NOT SCALE THIS DRAWING</p>	<p>SIZE DWG NO. SB SA150-0121</p>	<p>CAT / PART / ASSY NO. C150-0121</p>	<p>DWN BY KSH DATE 4/22/04 SHEET 1 OF 1</p>