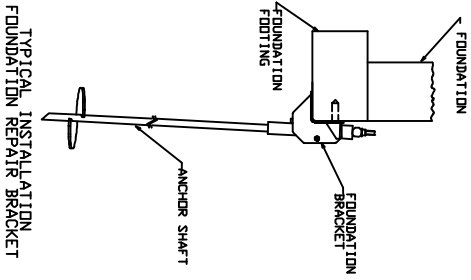
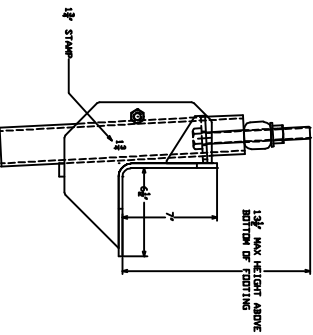
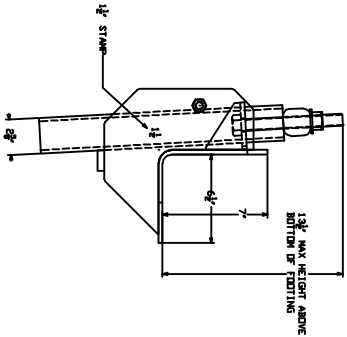
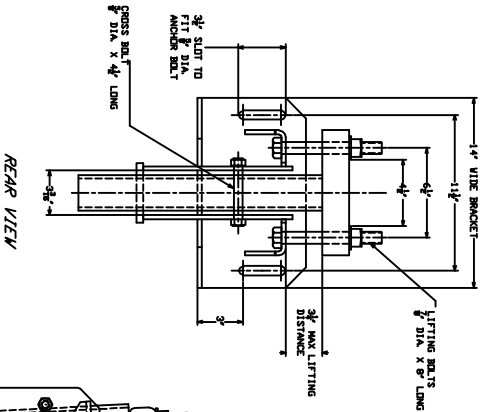
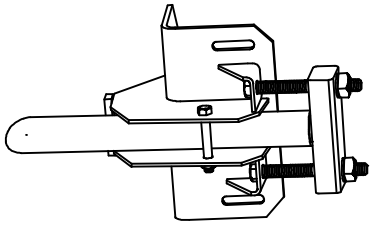


C150-0298 & C150-0299 HAVE MINIMUM MECHANICAL UL TIMATE STRENGTHS OF 80,000 LBS.

ICBD LISTED ER-5110

SBCI LISTED ER-95043



- NOTES-**
- HOT DIP GALVANIZE PER ASTM A153--(LATEST REVISION).
  - ASSEMBLED COMPLETE AS SHOWN IN SIDE VIEW.
  - DO NOT EXCEED 165 FT.-LBS DR TORQUE ON 7/8\" DIA LIFTING BOLTS DURING STABILIZING DR LOAD LOCK-OFF.
  - RECOMMENDED ANCHOR SHAFT CUTOFF LEVEL ABOVE THE BOTTOM OF THE FOOTING IS 10\" TO 11\" FOR MAXIMUM LIFT DISTANCE. FOR DETAILED INSTALLATION INSTRUCTIONS, READ CHANCE BULLETIN 01-9812.
  - MATERIAL SPECIFICATIONS:
    - BRACKET BODY: PER ASTM A36 AND ASTM A570 GRADE 50.
    - T-PIPE TUBE: HOT ROLLED MECHANICAL TUBING PER ASTM A500.
    - LIFTING BOLTS: HEX HEAD BOLT PER SAE J429 GRADE 5.
    - CROSS BOLT: HEX HEAD BOLT PER SAE J429 GRADE 5.
  - THE C150-0298 AND C150-0299 BRACKETS HAVE A MINIMUM ULTIMATE STRENGTHS OF 80,000 LBS. A FACTOR OF SAFETY OF 2 YIELDS A SAFE WORKING LOAD OF 40,000 LBS FOR THE BRACKETS ONLY.
  - THIS SYSTEM IS A FUNCTION OF MANY INDIVIDUAL ELEMENTS, INCLUDING THE UNDERPINNING, BRACKET, PIER SHAFT HELICAL PLATE, AND BEARING STRATA, AS WELL AS THE STRENGTH OF THE FOUNDATION TO BRACKET CONNECTION AND THE QUALITY OF PIER INSTALLATION. COLUMN THREE OF THE TABLE SHOWS TYPICAL UNDERPINNING SYSTEM CAPACITIES THAT ARE ACHIEVABLE UNDER NORMAL CONDITIONS. YOUR ACHIEVABLE CAPACITIES COULD BE HIGHER OR LOWER DEPENDING ON THE ABOVE FACTORS.

UNDERPINNING SYSTEM PER PIER/BRACKET LOAD RATINGS (SEE NOTE-8)			
ANCHOR TYPE	BRACKET	MINIMUM ULTIMATE STRENGTH	WORKING LOAD FACTOR 2.0 SAFETY TYPICAL ACHIEVABLE INSTALLED CAPACITIES
SS5	C150-0298	80,000 LB	40,000 LB
SS150	C150-0298	80,000 LB	40,000 LB
SS175	C150-0299	80,000 LB	40,000 LB

SIZE VIEW  
C150-0298 ACCEPTS  
SS5 & SS150 1 1/2\"/>

SIZE VIEW  
C150-0299 ACCEPTS  
SS175 1 1/2\"/>

**CHANCE TOLERANCE CHART**

**HUBBELL POWER SYSTEMS**

**STANDARD UNDERPINNING BRACKET**

COMPETITOR: THIS DRAWING AND ITS CONTENTS ARE CONFIDENTIAL, AND THE EXCLUSIVE PROPERTY OF HUBBELL POWER SYSTEMS. NO PART OF THIS DRAWING OR CONTENTS MAY BE MADE WITHOUT THE WRITTEN CONSENT OF HUBBELL POWER SYSTEMS. UNPUBLISHED ALL RIGHTS RESERVED UNDER THE COPYRIGHT LAWS.

DO NOT SCALE THIS DRAWING

SIZE DWG NO. SBI SA150-0298

CAT / PART / ASST NO. SA150-0298

DWN BY DVH DATE 3/4/04

REV C

SHEET 1 OF 1