

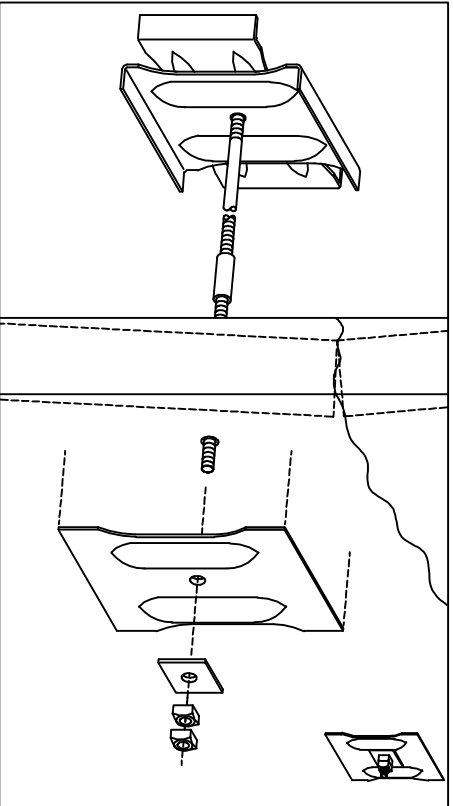
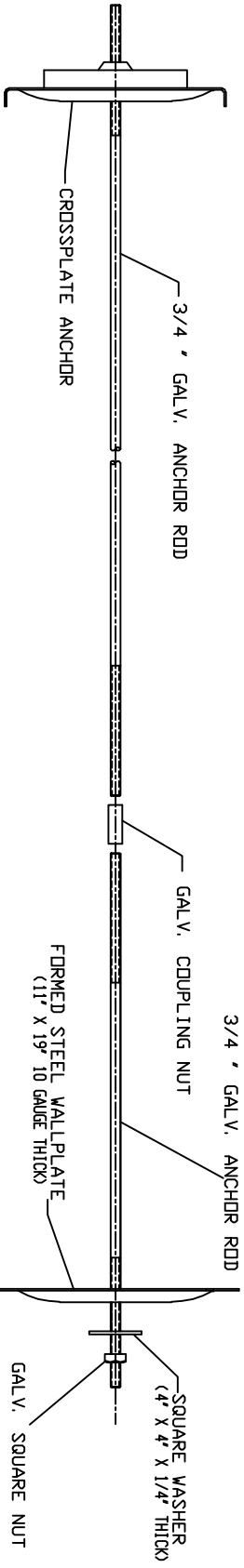
### WALL ANCHOR KITS

CATALOG NOZ	DESCRIPTION
T150-0362	20' GALV. CROSSPLATE ANCHOR, 19' GALV. WALLPLATE W/ WASHER & 9' X 3/4" RDD W/ 2 NUTS
T150-0363	20' CLEAR-COATED CROSSPLATE ANCHOR, 19' CLEAR-COATED WALLPLATE W/ WASHER & 9' X 3/4" RDD W/ 2 NUTS
T150-0364	20' GALV. CROSSPLATE ANCHOR, 19' GALV. WALLPLATE W/ WASHER, 9' X 3/4" RDD W/ 2 NUTS & 4-1/2' X 3/4" RDD W/ 1 NUT & 1 COUPLING
T150-0365	20' CLEAR-COATED CROSSPLATE ANCHOR, 19' CLEAR-COATED WALLPLATE W/ WASHER, 9' X 3/4" RDD W/ 2 NUTS & 4-1/2' X 3/4" RDD W/ 1 NUT & 1 COUPLING
T150-0366	20' GALV. CROSSPLATE ANCHOR, 19' GALV. WALLPLATE W/ WASHER, 4-1/2' X 3/4" RDD W/ 1 NUT & 1 COUPLING & 4-1/2' X 3/4" RDD W/ 1 NUT
T150-0367	20' CLEAR-COATED CROSSPLATE ANCHOR, 19' CLEAR-COATED WALLPLATE W/ WASHER, 4-1/2' X 3/4" RDD W/ 1 NUT & 1 COUPLING & 4-1/2' X 3/4" RDD W/ 1 NUT

### WALL ANCHOR ACCESSORY COMPONENTS

CATALOG NOZ	DESCRIPTION
T150-0348	FOUR EACH GALV. WASHERS, GALV. SQUARE NUTS & GALV. COUPLINGS (ALL FOR 3/4" RDD)
T150-0349	9' X 3/4" GALV. RDD W/ 18' OF THREAD BOTH ENDS
T150-0350	4-1/2' X 3/4" GALV. RDD W/ 18' OF THREAD BOTH ENDS
T150-0351	4-1/2' X 3/4" RDD, ALL THREAD
T150-0372	25' GALV. WALLPLATE W/ GALV. WASHER
T150-0373	25' CLEAR-COATED WALLPLATE W/ CLEAR-COATED WASHER
T150-0374	24' GALV. CROSSPLATE ANCHOR
T150-0375	24' CLEAR-COATED CROSSPLATE ANCHOR

- NOTES--
1. MINIMUM ULTIMATE TENSILE STRENGTH OF 3/4" RDD IS 23,000 LBS.
  2. FOR DETAILED INSTALLATION, INSTRUCTION PLEASE REFER TO A. B. CHANCE BULLETIN 31-9806-LATEST REVISION.



TYPICAL INSTALLATION OF DURA-GRIP WALL ANCHOR KIT

CHANCE		<b>HUBBEL POWER SYSTEMS</b> KIT, DURA-GRIP WALL ANCHOR	
CONSTRUCTION OF THIS DRAWING AND THE CONTENTS THEREOF IS THE SOLE PROPERTY OF HUBBEL POWER SYSTEMS. NO PART OF THIS DRAWING IS TO BE REPRODUCED OR TRANSMITTED IN ANY FORM OR BY ANY MEANS, ELECTRONIC OR MECHANICAL, INCLUDING PHOTOCOPYING, RECORDING, OR BY ANY INFORMATION STORAGE AND RETRIEVAL SYSTEM, WITHOUT THE WRITTEN PERMISSION OF HUBBEL POWER SYSTEMS.	SIZE: 1/8" = 1'	DATE: 11-12-98	SHEET: 1/1
DESIGNED BY: C SA150-0364	SEE CHART	DATE: 11-12-98	SHEET: 1/1