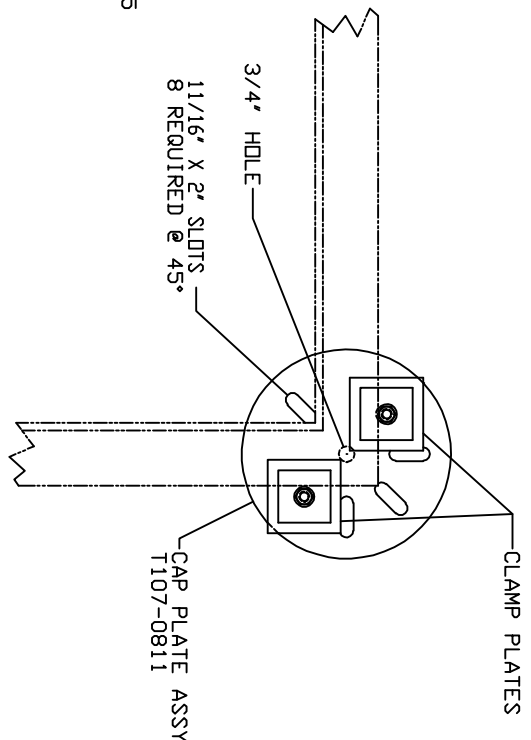
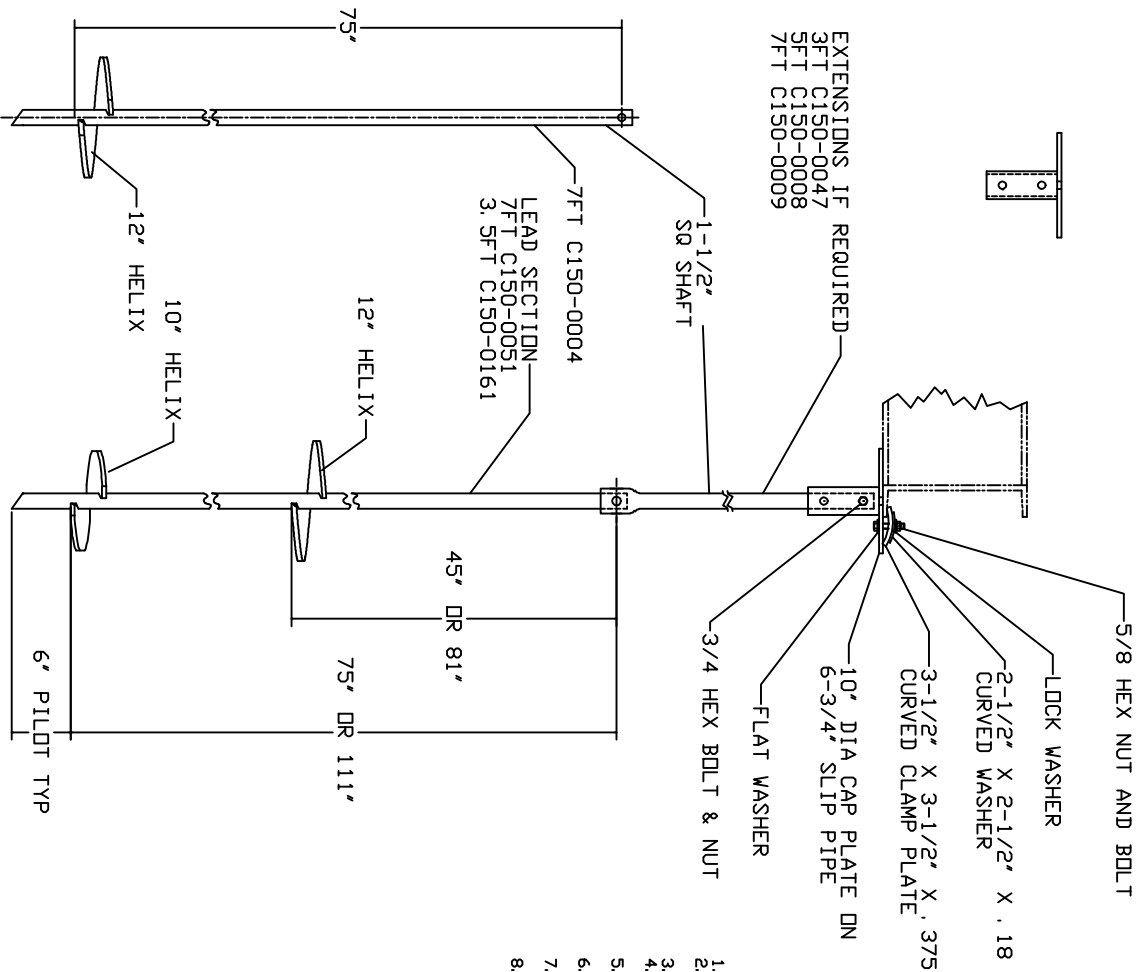


T107-0811
CAP PLATE DETAIL
4-11/16" TD 7-5/16" BOLT CIRCLE



==NOTES==

1. HOT DIP GALVANIZED PER ASTM A153-(LATEST REV.)
2. NOMINAL SPACING BETWEEN HELIX PLATES IS THREE TIMES THE DIAMETER OF THE LOWER HELIX.
3. SHAFT MATERIAL PER ASTM A29.
4. HELIX AND PLATE MATERIAL PER GENERAL REQUIREMENT OF A151 HOT ROLLED STEEL SHEET.
5. COUPLING BOLT: 3/4" DIAMETER X 3.00" LONG HEX HEAD PER ASTM - A320 GRADE L-7.
6. MANUFACTURER TO HAVE IN EFFECT INDUSTRY RECOGNIZED WRITTEN QUALITY CONTROL FOR ALL MATERIALS AND MANUFACTURING PROCESSES.
7. ALL WELDING TO BE DONE BY WELDERS CERTIFIED UNDER SECTION 5 OF THE AWS CODE D1.1.
8. EXTENSIONS MUST BE PROVIDED WITH A HOT FORGE EXPANDED INTERGRAL COUPLING CONNECTION ON ONE END.

MECHANICAL RATING:

TORQUE: 5,000 FT-LB

AXIAL LOAD: 10,000 LBS

SIDE LOAD RATING IN SOIL*

SIDE LOAD: 420 LB. APPLIED 6 INCHES ABOVE GRADE

*SIDE LOAD RATING ASSUMES:

WATER TABLE BELOW FOUNDATION

2 TO 1 SAFETY FACTOR

MINIMUM BLOW COUNT SOIL OF 4 PER ASTM D1586

5 FT MINIMUM SHAFT LENGTH IN CLAY

8 FT MINIMUM SHAFT LENGTH IN SAND

<p>CONSTRUCTION: THE DRAWING AND THE FOUNDATION SHALL BE THE PROPERTY OF HUBBELT POWER SYSTEMS. NO PART OF THIS DRAWING SHALL BE REPRODUCED OR TRANSMITTED IN ANY FORM OR BY ANY MEANS, ELECTRONIC OR MECHANICAL, INCLUDING PHOTOCOPYING, RECORDING, OR BY ANY INFORMATION STORAGE AND RETRIEVAL SYSTEMS, WITHOUT THE WRITTEN PERMISSION OF HUBBELT POWER SYSTEMS.</p>	
<p>CHANCE</p>	<p>HUBBELT POWER SYSTEMS FOUNDATION, COMMUNICATION SYSTEM</p>
<p>DATE: 1/26/99</p>	<p>REV: B</p>
<p>NO. OF SHEETS: 10018</p>	<p>SHEET 1 OF 1</p>