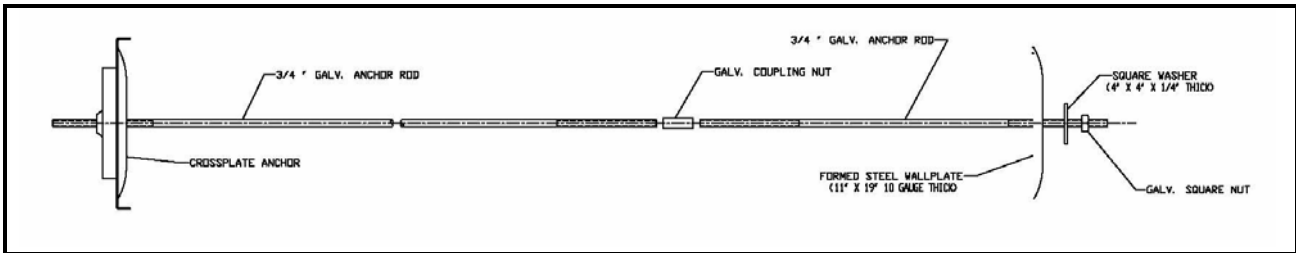


**DURA GRIP® WALL ANCHOR KITS**



WALL ANCHOR KITS		WALL ANCHOR ACCESSORY COMPONENTS	
Designation	Description	Designation	Description
T150-0362	20" galv crossplate anchor, 19" galv wallplate w/ washer and 9' x 3/4" rod w/ 2 nuts.	T150-0348	Four each: galv washers, galv square nuts and galv couplings (all for 3/4" rod).
T150-0363	20" clear-coated crossplate anchor, 19" clear-coated wallplate w/ washer and 9' x 3/4" rod w/ 2 nuts.	T150-0349	9' x 3/4" galv rod w/ 18" of thread on both ends.
T150-0364	20" galv crossplate anchor, 19" galv wallplate w/ washer, 9' x 3/4" Rod w/ 2 nuts and 4-1/2' x 3/4" rod w/ 1 nut and 1 coupling.	T150-0350	4-1/2' x 3/4" galv rod w/ 18" of thread on both ends.
T150-0365	20" clear-coated crossplate anchor, 19" clear-coated wallplate w/ washer, 9' x 3/4" rod w/ 2 nuts and 4-1/2' x 3/4" rod w/ 1 nut and 1 coupling.	T150-0351	4-1/2' x 3/4" rod, all-thread.
T150-0366	20" galv crossplate anchor, 19" galv wallplate w/ washer, 4-1/2' x 3/4" rod w/ 1 nut and 1 coupling and 4-1/2' x 3/4" rod w/ 1 nut.	T150-0372	25" galv wallplate w/ galv washer.
T150-0367	20" clear-coated crossplate anchor, 19" clear-coated wallplate w/ washer, 4-1/2' x 3/4" rod w/ 1 nut and 1 coupling and 4-1/2' x 3/4" rod w/ 1 nut.	T150-0373	25" clear-coated wallplate w/ clear-coated washer.
		T150-0374	24" galv crossplate anchor.
		T150-0375	24" clear-coated crossplate anchor.